



ANSER CODING INC.

金泰噴碼科技股份有限公司

Assembly & Disassemble SOP

ANSER CONFIDENTIAL

Disassemble



1. Please remove the printhead protective plate by unscrewing the 4 screws (2 in each side).





2 . Remove the steel plate by unscrewing the 4 screws.





3. Remove the cartridge latch.



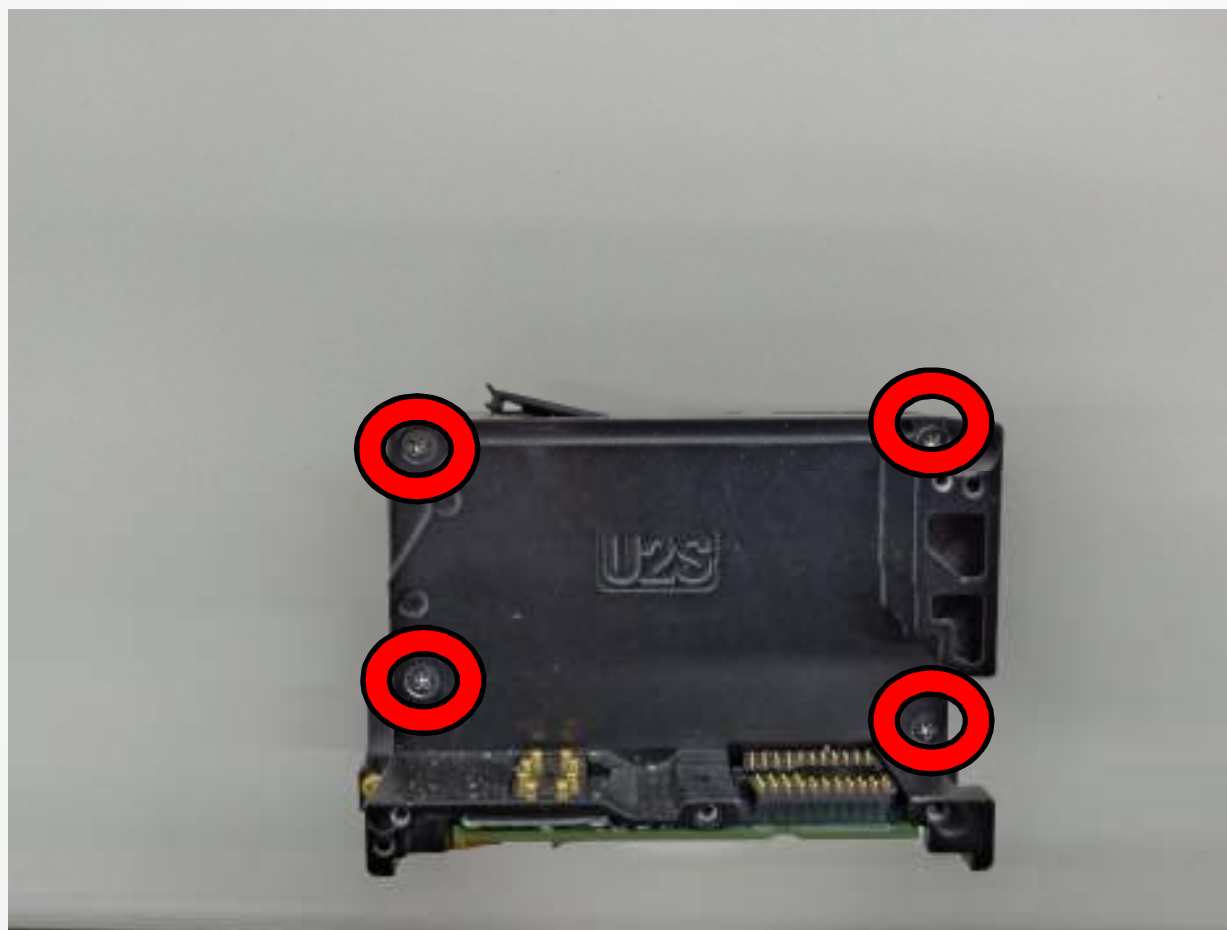


4. Remove port cover by unscrewing the two screws pointed by the arrows.



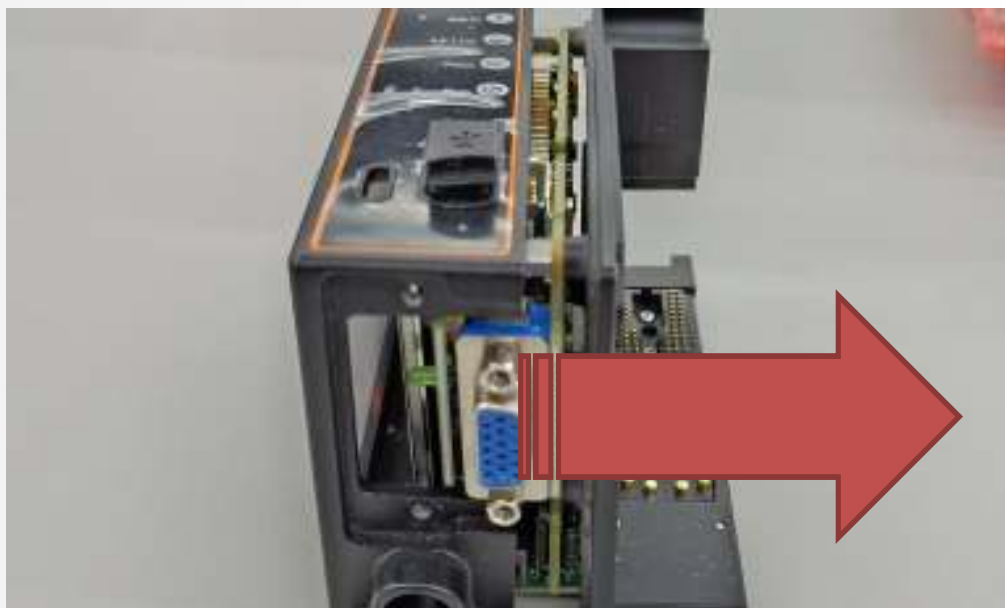


5. Please remove the holder of the hardware boards by unscrewing the 4 screws.





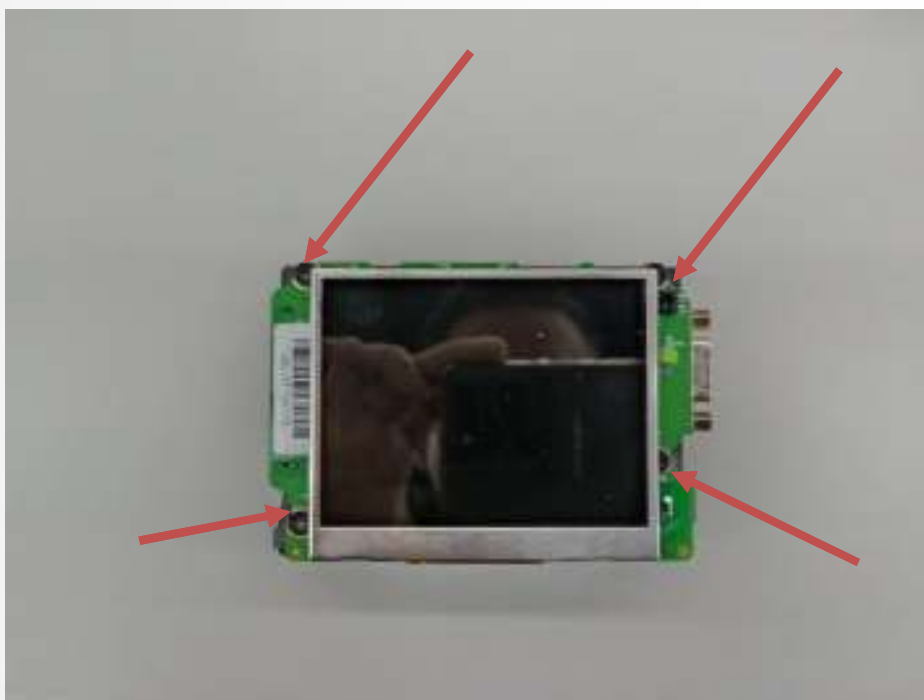
6. Separated the base holding the boards from the front case by pulling.





7. Please unscrew the 4 screws indicated by the arrows.

Note: Before unscrewing remove the display to avoid damaging the display while unscrewing. Pull the two holders as shown in the right figure.



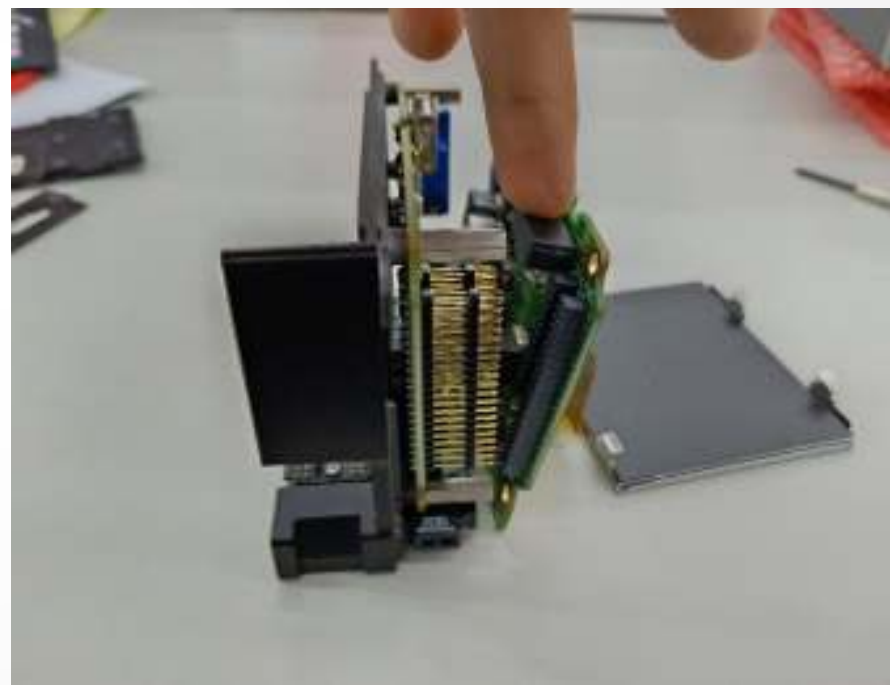
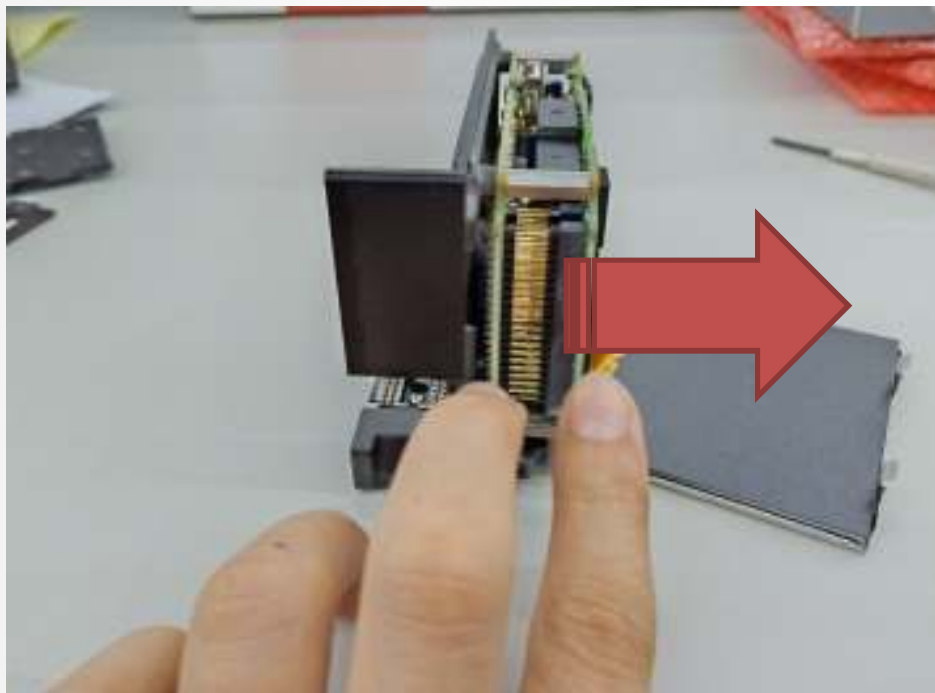


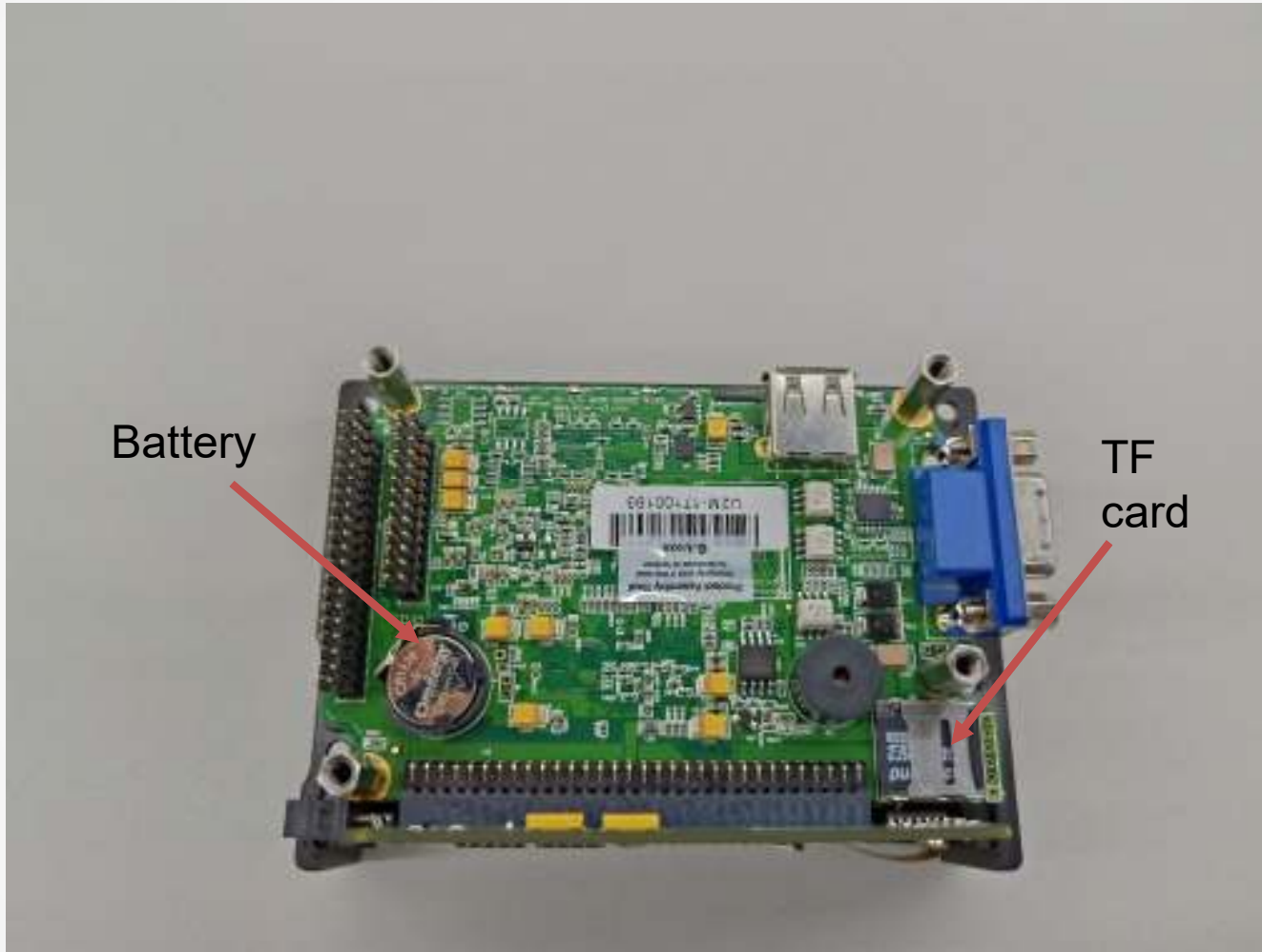
After unscrewing you can leave the display as it is shown in the below picture making sure it doesn't get damaged.





8. Please remove the LCD board from the main board by carefully unplugging the golden pins.

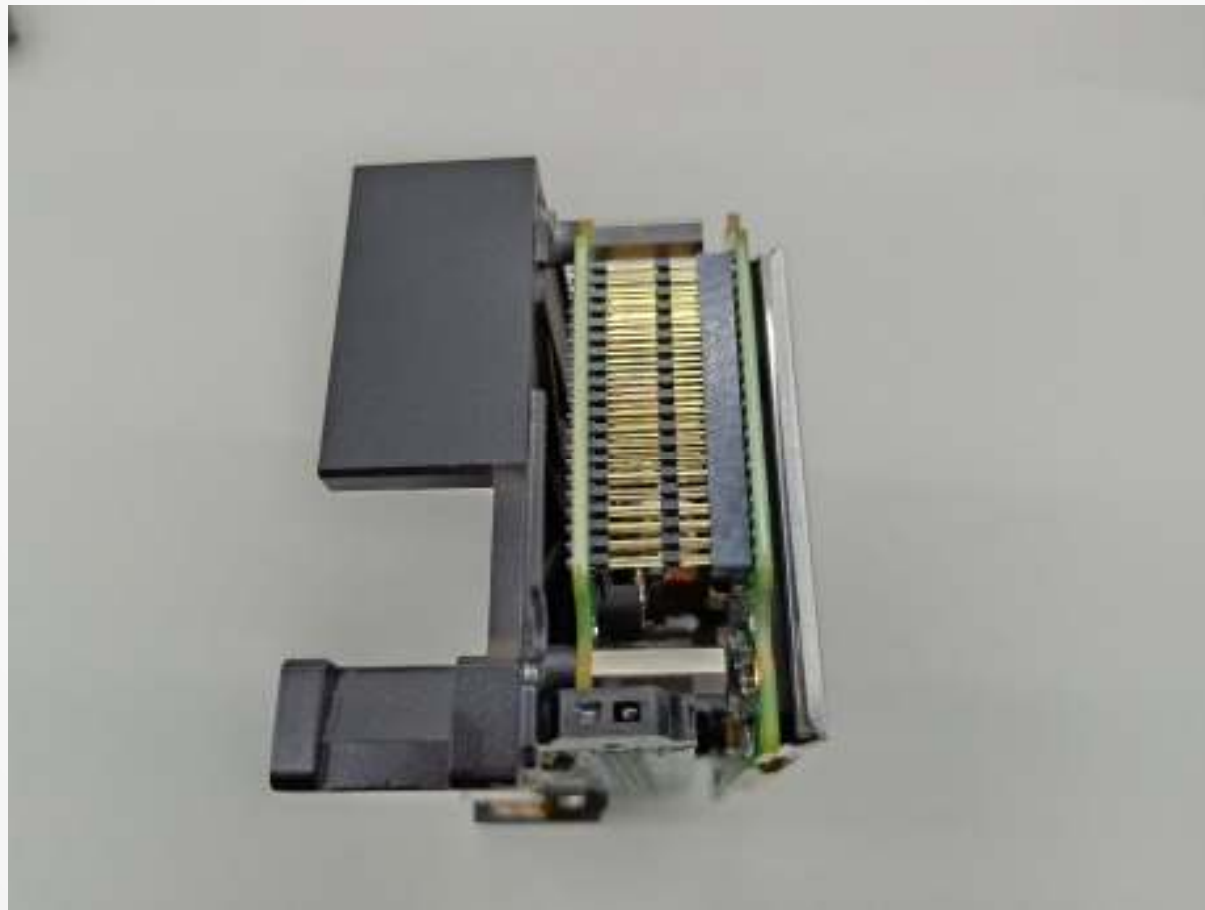




Assembly

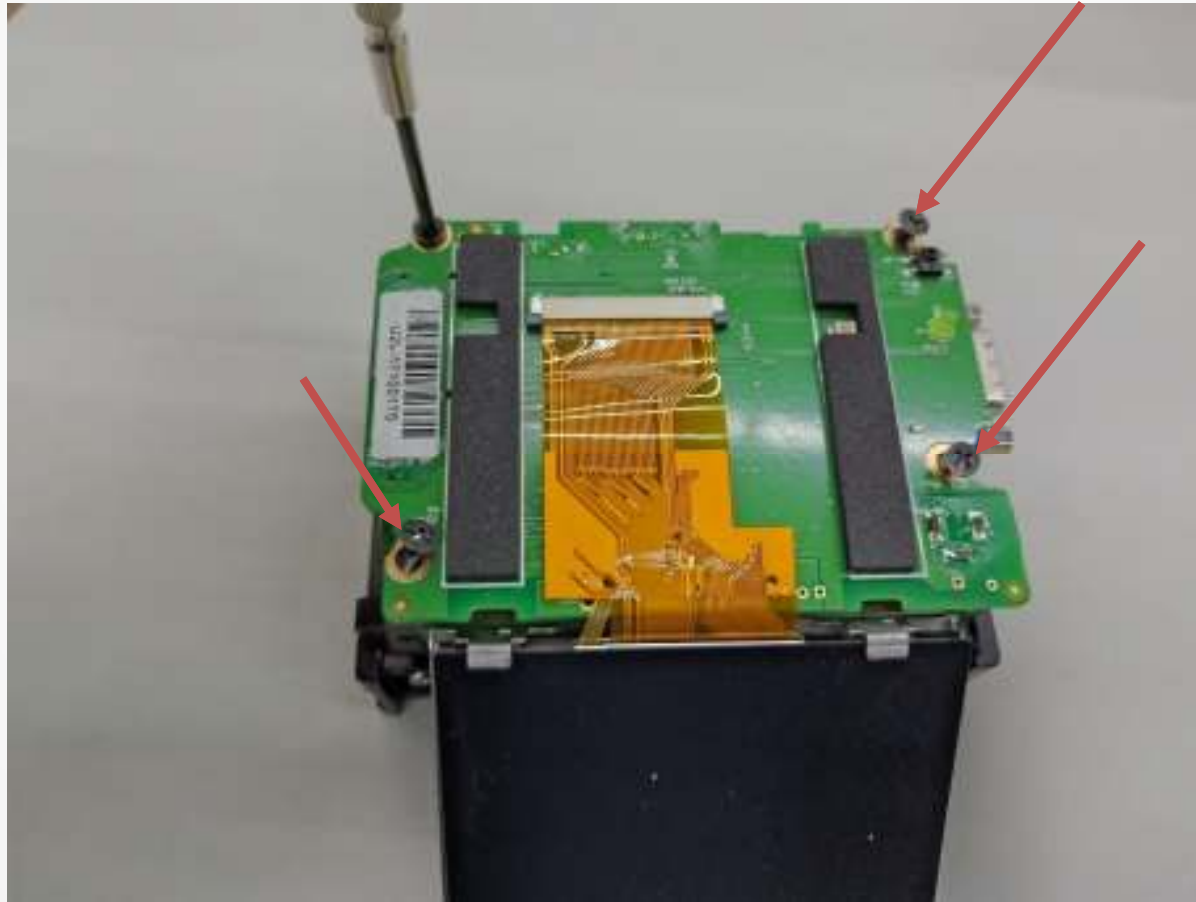


1. Join the LC board and main board by carefully connecting the golden pins. Make sure each pin goes into its designated position.





2. Screw back the 4 screws.





3. Put back the display on top of the LCD board making sure that it grabs correctly as shown in the below figures.





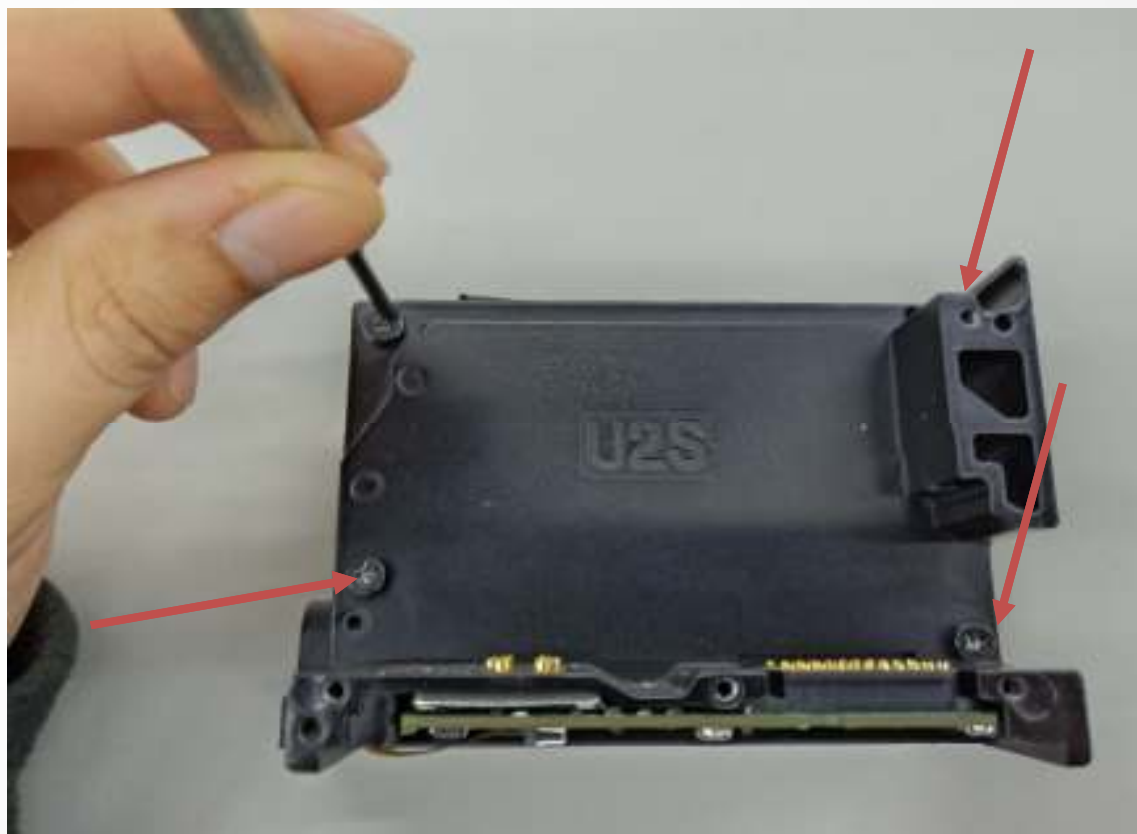
4. Now put back the all the assembled boards into the display casing.

Note: Before putting back the boards, make sure the IR switch is in place.





5. Screw back the 4 screws as shown in right side figure.





6. Put back the port protective cover and screw back the 2 screws as shown below.





7. Put back the cartridge latch by first inserting the steel bar as shown in the left side figure.





8. Put back the steel plate making sure that the steel bar of the cartridge latch stays in the right position.





9. Screw back the 4 screws.





10. Put back the printhead cover and screw back the 4 screws.







This document and any files transmitted with it are confidential and intended solely for the use of the individual or entity to whom they are addressed. If you have received this document in error please notify the document manager. This message contains confidential information and is intended only for the individual named. If you are not the named addressee you should not disseminate, distribute or copy this document. Please notify the sender immediately by document if you have received this document by mistake and delete this document from your system. If you are not the intended recipient you are notified that disclosing, copying, distributing or taking any action in reliance on the contents of this information is strictly prohibited.

本份文件及相關附件均列為本公司機密文件管制範圍，僅限本公司內部使用，非經本公司及發件本人同意，不得轉寄(載)、複製、發佈、公開或傳送給本公司以外之組織、單位或個人，如果您誤收本份文件，請立即通知本文件管理者，否則將依法究責。